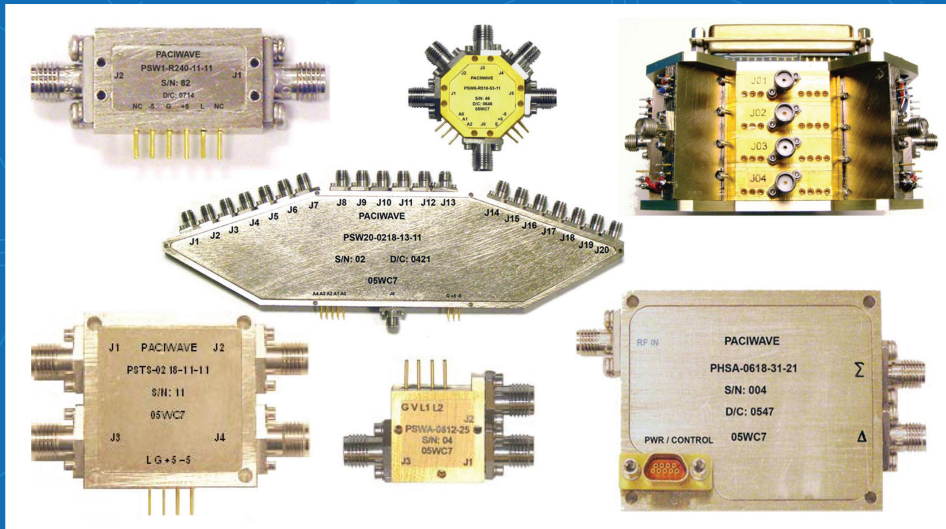


RF PIN Diode Switches & Assemblies



10 MHz – 40 GHz

Top Row: SPST Millimeter Wave, Single Pole Five Throw, 4x9 Switch Matrix
Middle: SP20T Packaged for Antenna Array
Bottom Row: Transfer Switch, Limiter/Switch Assembly, Switch/Hybrid Assembly

dB Control's high-power, environmentally sealed broadband and narrow band RF PIN Diode switches and assemblies ensure accurate test and measurement of multiple RF components used in radar systems, electronic warfare systems, ground-based communications systems and other applications. All units feature integral TTL and field-replaceable connectors that allow easy removal so that units can be dropped into designs to interface directly with pins, saving considerable space.

Single pole switches are available with from one to 24 throws. Customized integrated switch assemblies include matrices, filter banks, switched amplifiers and hybrid switched power dividers.

Specifications

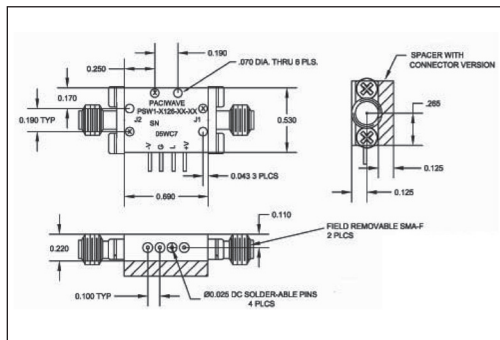
- 10 MHz – 40 GHz
- Low insertion to 0.3 dB
- 60 dB – 100 dB isolation
- 10 nsec – 30 nsec switching speed
- 2.0:1 VSWR
- +20 dBm minimum CW, 2W peak power handling
- -55°C – +85°C operating temperature

Options

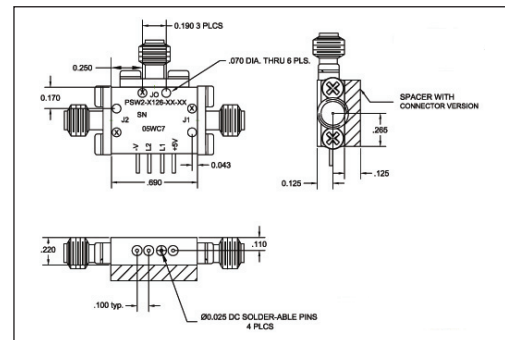
- Phase and amplitude matching
- DC supply and logic interfaces
- Absorptive capability

SINGLE POLE PIN SWITCH INSERTION LOSS (dB)

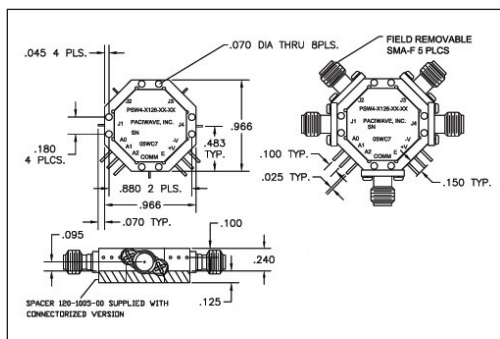
	.01-3.0 GHz	To 6.0 GHz	To 9.0 GHz	To 18.0 GHz	To 26.5 GHz
1 Throw	0.9	1.4	1.7	2.2	2.5
2 Throw	1.0	1.5	1.8	2.3	2.7
3 Throw	1.1	1.6	1.9	2.6	2.9
4 Throw	1.2	1.7	2.0	2.7	3.1
5 Throw	1.2	1.8	2.2	2.8	3.3
6 Throw	1.3	1.9	2.3	3.0	3.5
7 Throw	1.4	2.1	2.5	3.2	3.8
8 Throw	1.6	2.3	2.7	3.4	4.0
9 Throw	1.9	2.9	3.8	4.1	4.3
10 Throw	2.2	3.7	4.8	5.1	5.5
12 Throw	2.6	4.2	5.5	5.9	6.3
16 Throw	2.9	4.5	6.4	6.8	7.3
20 Throw	4.3	5.4	7.3	7.8	8.5
24 Throw	5.2	6.4	8.2	8.9	10.0



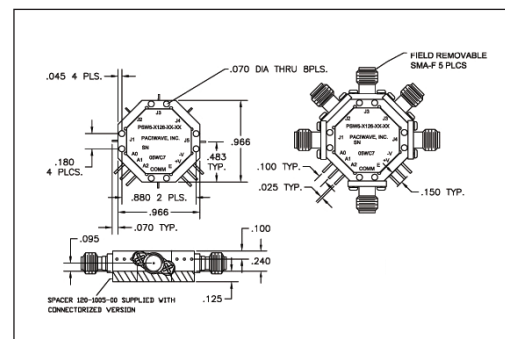
SINGLE POLE SINGLE THROW



SINGLE POLE DOUBLE THROW



SINGLE POLE FOUR THROW



SINGLE POLE FIVE THROW

Specifications subject to change without notice.